



The Nitrous should be adjusted exactly to the current rider for reaching maximum safety and fun while riding.

All adjustments should be done at the local Scott dealer or following to this manual.

CONTENT

> Nitrous Concept	p. 2
> Geometry/Technical Data Nitrous	p. 2
> Scott Smart Cable Routing	p. 3
> Adjustment of Seatpost-Height	p. 3
> Rear Travel	p. 4
> Set-Up Nitrous	p. 5
> Set-Up of other Rear Shocks	p. 6
> Replaceable Drop Outs	p. 7/8
> Front Fork Set-Up/Change of Front Fork	p. 9
> Pivot Maintenance	p. 9
> Warranty	p. 10/11
> Maintenance Schedule	p. 12/17

CONTENT

ENGLISH

DEUTSCH

FRANÇAIS

01

CONCEPT

Priority while designing the Nitrous was to find a perfect hardcore Freeride/DH-bike.

SCOTT decided to use the pivot position of the swingarm of the Octane 2000-2002 which is already wellknown and highly appreciated by independent bike magazines.

This pivot position combines perfect climbing uphill with optimum freeride function on the downhill.

GEOMETRY

TECHNICAL DATA NITROUS

Size	Headangle	HT Length	TT Horizon	Seatangle	Top ST	CST Length	BB OS
Small	67°	110	560	73.5°	450	432	+ 25
Medium	67°	115	585	73.5°	470	432	+ 25
Large	67°	120	610	73.5°	490	432	+ 25

Travel	195 mm
Shock (Eye to Eye)	200 mm
Hardware Mainframe	22,2 mm x 6 mm, screw length 40 mm
Hardware Swingarm	22,2 mm x 6 mm, screw length 36 mm
Seatpost	Ø 34,9 mm
Headset	1,5"
Fork travel	200 mm / 170 mm
Fork length	575 mm
BB housing	73 mm
Front derailleur	Topswing 31,8 mm Toppull
Chainguard	ISCG Standard
Bearings	61803 2RS 17x26x5 4 St.

SCOTT SMART CABLE ROUTING

The direct and straight cable system on all our full suspension models allows Smart Cable Routing which is very resistant against water and dirt.

To change the cables simply unscrew and open the three cable brackets on the downtube.

1



Smart cable routing

MECHANICS HINT

The outer housing of the cables can also be fixed on the bottle cage with cable fixers, the two brackets below the cage are not needed anymore.

2



ADJUSTMENT OF SEAT POST-HEIGHT

IMPORTANT!

The seatpost has to be brought into the seattube at a minimum of 100mm and must not stick out more than 25mm at the bottom end.

Some bikes of the Nitrous series are equipped with a telescope seatpost which offers a wider adjustment range of the seatheight.

In case you want to upgrade your Nitrous with the telescope seatpost you can order it at your local Scott dealer with article number 15.1.844.405.0.349.

3

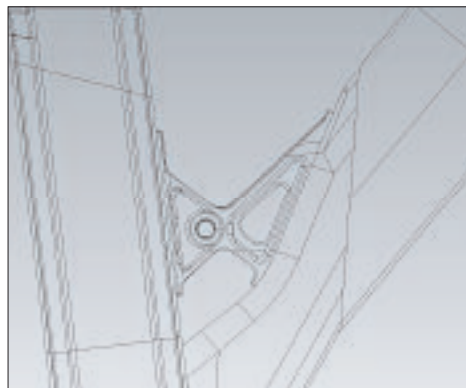


Telescope seatpost

REAR TRAVEL NITROUS

Using the 200mm rear shock of Fox (eye to eye 200 mm, Travel 57mm) will result in 195mm rear travel at a suspension ratio of 3,42.

4



Shock mount main frame

5



Piggy Pack up-front

IMPORTANT

Note that you have to mount the Fox Rear Shock always with the container (Piggy Pack) as shown underneath in the position "front top".

Mounting the rear shock in a different position can lead to severe damages at the frame, the swingarm and the rear shock.

SET-UP NITROUS

Coil-Over-Shock:

For the adjustment of the negative travel (SAG) of Nitrous it is really important to check first if the coil fits to the weight of the rider.

Recommended coil:

Print on coil	Weight of Rider
350 x 2.25	55- 65 kg
450 x 2.25	65- 75 kg
550 x 2.25	75- 85 kg
650 x 2.25	85- 95 kg
750 x 2.25	95- xx kg

Inline we will have size S with coil 450 x 2.25 for 65-75 kg rider weight, size M with coil 550 x 2.25 for 75-85 kg and size L with coil 650 x 2.25 for 85-95 kg rider weight.

If the recommended coil for the weight of the rider is mounted on the bike, you can start to adjust the SAG.

With an eye-to-eye distance of 190mm and a shock travel of 57mm we recommend a SAG between 25-30% of the shock travel which means 15-18mm.

When sitting on the bike there should be an eye-to-eye distance of 177-180mm.

An easy way to control the SAG is to use the SAG-Boy on the back of this manual.

The SAG-Boy is with middle length of 178.5mm on the back of the manual.

We recommend a minimum preload of the coil of 2-3 turns of the preload cup and a maximum preload of 7-8 turns.

In case you need more or less preload please use a softer or harder coil.

For further information concerning the rear shock please read the attached manual of the rear shock producer.

IMPORTANT

After a dismantlement of the rear shock, the front fixing bolt on the mainframe of the rear shock should be tightened with a tightening torque of 14 Nm, the rear shock fixing bolt on the swingarm with 10 Nm.

If this is not done correctly the rear shock can be damaged.

SET-UP OF OTHER SHOCK MODELS

If you want to use a different rear shock model than the one originally on the bike, please make sure that the shock will not damage the frame.

Please follow the instruction below:

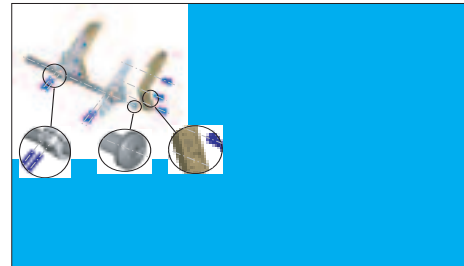
Please make sure that the rear shock or its accessory parts do not touch the frame when mounting or suspending.

For doing so remove the coil, install the shock and compress the shock completely.

If the shock touches the frame while doing so do not use this shock in order to avoid damage to frame, swingarm or shock.

Please check this issue on all travel adjustment options.

6



Shock without spring

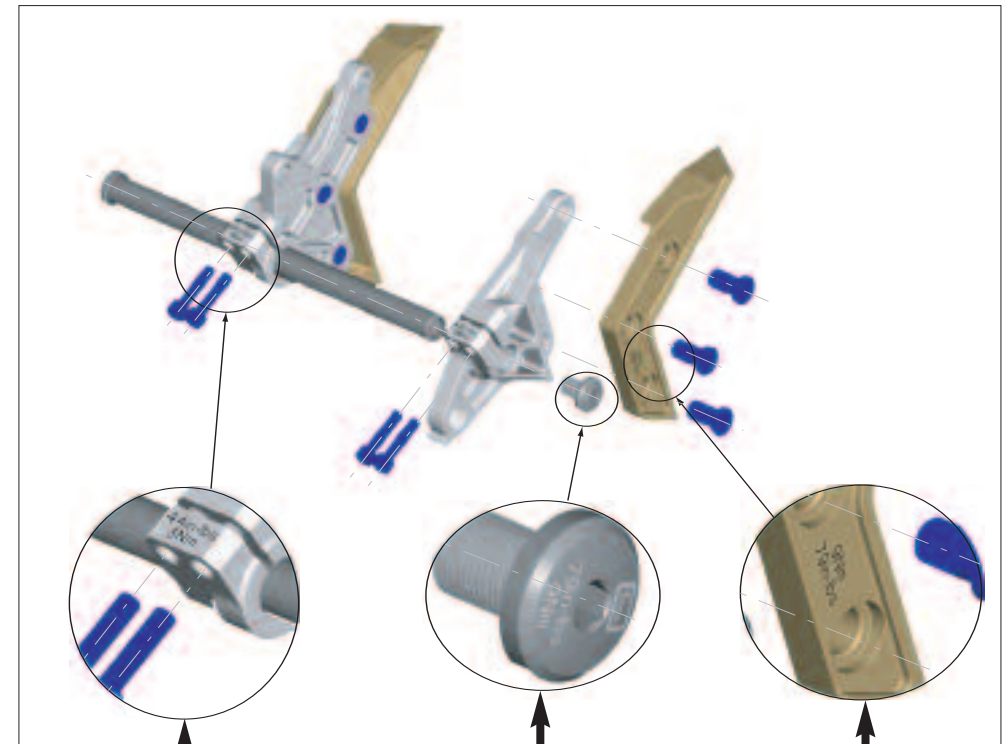
REPLACEABLE DROPOUTS

On Nitrous bikes of model year 06 you'll find 2 different styles of dropouts

Please check the tightening torques of the screws on the pictures below.

1. Drop out for 12mm through axle system rear hub:

7



44in-lbs
5 Nm

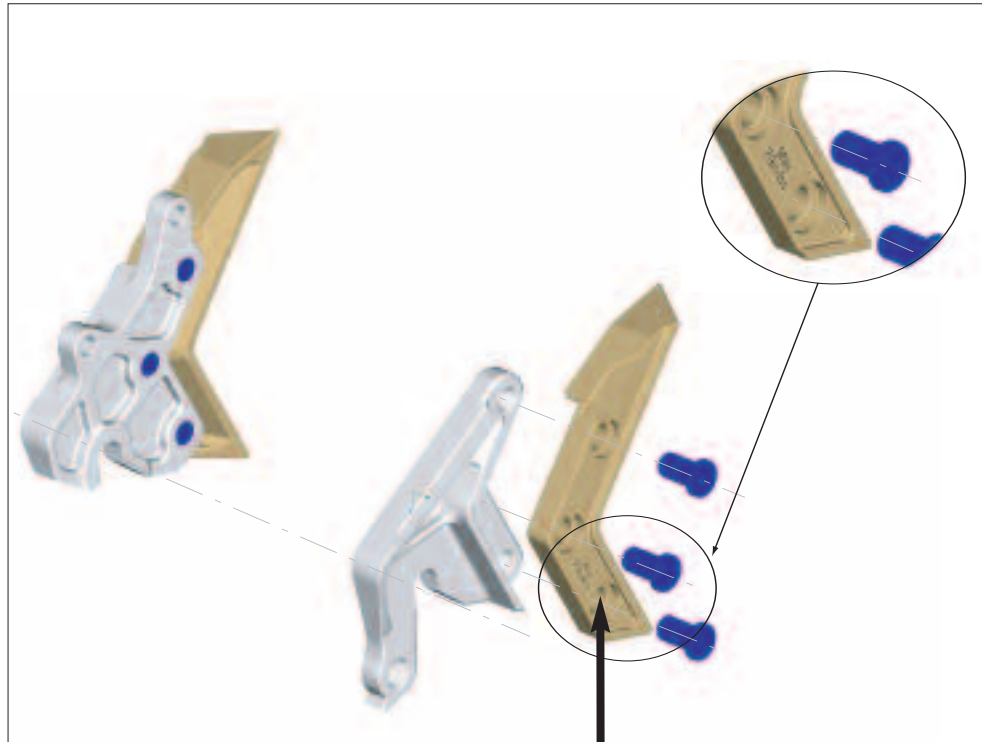
79in-lbs
9 Nm

79in-lbs
9 Nm

REPLACEABLE DROPOUTS

2. Drop out for standard QR axle system rear hub:

8



79in-lbs
9 Nm

FRONT FORK SET - UP
CHANGE OF FRONT FORK

For the set up of the front fork please use the fork specific manual attached to the bike.

We recommend to use front forks with a travel between 150-200mm, as this will not influence too much the geometry and handling of the bike.

The frame also can be used with a double bridge crown (triple-clamp-design).

Please ask your Scott dealer to make sure that the fork of your choice will not damage the frame.

The frame of Nitrous is originally equipped with a head tube with a diameter to fit 1.5" fork steerer tubes.

Some complete bikes are equipped with a reducer-headset to use forks with a steerer diameter of 1 1/8", or the bikes have an alloy reducer from 1.5" to 1 1/8" to fit for standard 1 1/8" headsets.

In case you want to use a fork with 1.5" standard steerer you have to replace the original headset.

PIVOT MAINTENANCE

The pivot and bearings on SCOTT Nitrous are extremely easy to maintain.

An external treatment with a grease spray after every bike wash is all you have to do. We do not recommend heavy grease sprays since these will leave a film on the parts which is difficult to remove. We recommend the same for the chain also.

If you have to change the bearings you can order them included in a service kit at your local SCOTT dealer with parts number 15.1.860.402.0.000 or buy them with international parts number 61803 2RS 17x26x5 in a hardware store.

In case of a change of the bearings or of the rear swingarm you should contact your local SCOTT dealer therefore you need special tools for disassembly and assembly.

WARRANTY

Model _____

Year _____

Size _____

Frame _____

The SCOTT Fullsuspension bikes are made using the most innovative production and quality methods.

Nevertheless such an outstanding product needs to be checked up to once a year by a SCOTT expert with the help of the enclosed maintenance schedule. Doing so you will have always maximum performance and security while riding.

In case you have brought your bike to an annual maintenance service at your SCOTT-dealer and you have a fulfilled maintenance schedule, SCOTT grants a doubling of the warranty period of two years on the frame and swingarm of your SCOTT Fullsuspension Bike as mentioned in the standard manual A from 2 up to 4 years.

SCOTT grants this warranty even though you are taking part in races or long distance races. SCOTT bikes are conceived by bikers for bikers! Material damages of the bike caused by accidents or falls are not covered.

The warranty for parts and components of other producers (e.g. suspension fork, shifting components) is defined in the warranty regulations of the respective producer.

Wear and tear elements are not covered by this warranty. A detailed list of all wear and tear elements is to find in the enclosed standard manual A.

Once the check up is made and it is reported in the maintenance schedule, the warranty period is extended from 2 up to 4 years.

The costs of the maintenance service are borne by the owner of the bike.

Under reservation of the warranty regulation of the standard manual A.

Date of Service:

Dealers Signature:

SCOTT SERVICE PLAN

Model _____

Year _____

Size _____

Frame _____

Date of purchase _____

Annual service to be done

- > Check of shock mounts incl. lubricating the bushings
- > Check of swingarm pivot incl. axle and mounts
- > Check of rear shock according to the enclosed shock manual
- > Check of hubs, bottom bracket and headset
- > Check of all screws of the bike
- > Check of handle bar, stem, saddle rails and seat post
- > Check if brakepads and rims are worn out
- > Check of disc brake according to enclosed service manual
- > Check of suspension fork according to enclosed service manual
- > Check of shifters and derailleurs incl. cables.

Date of Service:

Dealers Signature:

SCOTT SERVICE PLAN

Model _____

Year _____

Size _____

Frame _____

Date of purchase _____

Annual service to be done

- > Check of shock mounts incl. lubricating the bushings
- > Check of swingarm pivot incl. axle and mounts
- > Check of rear shock according to the enclosed shock manual
- > Check of hubs, bottom bracket and headset
- > Check of all screws of the bike
- > Check of handle bar, stem, saddle rails and seat post
- > Check if brakepads and rims are worn out
- > Check of disc brake according to enclosed service manual
- > Check of suspension fork according to enclosed service manual
- > Check of shifters and derailleurs incl. cables.

Date of Service:

Dealers Signature:

SCOTT SERVICE PLAN

Model _____

Year _____

Size _____

Frame _____

Date of purchase _____

Annual service to be done

- > Check of shock mounts incl. lubricating the bushings
- > Check of swingarm pivot incl. axle and mounts
- > Check of rear shock according to the enclosed shock manual
- > Check of hubs, bottom bracket and headset
- > Check of all screws of the bike
- > Check of handle bar, stem, saddle rails and seat post
- > Check if brakepads and rims are worn out
- > Check of disc brake according to enclosed service manual
- > Check of suspension fork according to enclosed service manual
- > Check of shifters and derailleurs incl. cables.

Date of Service:

Dealers Signature:

SCOTT SERVICE PLAN

Model _____

Year _____

Size _____

Frame _____

Date of purchase _____

Annual service to be done

- > Check of shock mounts incl. lubricating the bushings
- > Check of swingarm pivot incl. axle and mounts
- > Check of rear shock according to the enclosed shock manual
- > Check of hubs, bottom bracket and headset
- > Check of all screws of the bike
- > Check of handle bar, stem, saddle rails and seat post
- > Check if brakepads and rims are worn out
- > Check of disc brake according to enclosed service manual
- > Check of suspension fork according to enclosed service manual
- > Check of shifters and derailleurs incl. cables.

Date of Service:

Dealers Signature:

SCOTT SERVICE PLAN

Model _____

Year _____

Size _____

Frame _____

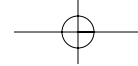
Date of purchase _____

Annual service to be done

- > Check of shock mounts incl. lubricating the bushings
- > Check of swingarm pivot incl. axle and mounts
- > Check of rear shock according to the enclosed shock manual
- > Check of hubs, bottom bracket and headset
- > Check of all screws of the bike
- > Check of handle bar, stem, saddle rails and seat post
- > Check if brakepads and rims are worn out
- > Check of disc brake according to enclosed service manual
- > Check of suspension fork according to enclosed service manual
- > Check of shifters and derailleurs incl. cables.

Date of Service:

Dealers Signature:



SCOTT SERVICE PLAN

Model _____

Year _____

Size _____

Frame _____

Date of purchase _____

Annual service to be done

- > Check of shock mounts incl. lubricating the bushings
- > Check of swingarm pivot incl. axle and mounts
- > Check of rear shock according to the enclosed shock manual
- > Check of hubs, bottom bracket and headset
- > Check of all screws of the bike
- > Check of handle bar, stem, saddle rails and seat post
- > Check if brakepads and rims are worn out
- > Check of disc brake according to enclosed service manual
- > Check of suspension fork according to enclosed service manual
- > Check of shifters and derailleurs incl. cables.

Date of Service:

Dealers Signature:

