

«SAG-BOY»

The length of the grey beam shows the optimum eye-to-eye distance of the rear shocks.

Der graue Balken zeigt den optimalen Bolzenabstand des Dämpfers.

La longueur de la barre grise représente l'écart optimal entre les points de fixation de l'amortisseur.

OWNERS MANUAL
BEDIENUNGSANLEITUNG
MANUEL D'UTILISATION



NITROUS

Scott Sports SA
Route du Crochet 17
1762 Givisiez / Switzerland

www.scott-sports.com



2007  BIKE
OWNERS
MANUAL

R



The Nitrous should be adjusted exactly to the current rider for reaching maximum safety and fun while riding.

All adjustments should be done at the local Scott dealer or following to this manual.



CONTENT

> Nitrous Concept	p. 2
> Geometry/Technical Data Nitrous	p. 2
> Scott Smart Cable Routing	p. 3
> Adjustment of Seatpost-Height	p. 3
> Rear Travel	p. 4
> Set-Up Nitrous	p. 5
> Set-Up of other Rear Shocks	p. 6
> Replaceable Drop Outs	p. 7/8
> Front Fork Set-Up/Change of Front Fork	p. 9
> Pivot Maintenance	p. 9
> Warranty	p. 10/11

CONCEPT

Priority while designing the Nitrous was to find a perfect hardcore Freeride/DH-bike.

SCOTT decided to use the pivot position of the swingarm of the Octane 2000-2002 which is already well-known and highly appreciated by independent bike magazines.

This pivot position combines perfect climbing uphill with optimum freeride function on the downhill.

GEOMETRY TECHNICAL DATA NITROUS

Size	Headangle	HT Length	TT Horizon	Seatangle	Top ST	CST Length	BB OS
Small	67°	110	560	73.5°	450	432	+ 25
Medium	67°	115	585	73.5°	470	432	+ 25
Large	67°	120	610	73.5°	490	432	+ 25

Travel	195 mm
Shock (Eye to Eye)	200 mm
Hardware Mainframe	22,2 mm x 6 mm, screw length 40 mm
Hardware Swingarm	22,2 mm x 6 mm, screw length 36 mm
Seatpost	Ø 34,9 mm
Headset	1,5"
Fork travel	200 mm / 170 mm
Fork length	575 mm
BB housing	73 mm
Front derailleur	Topswing 31,8 mm Toppull
Chainguard	ISCG Standard
Bearings	61803 2RS 17x26x5 4 St.

SCOTT SMART CABLE ROUTING

The direct and straight cable system on all our full suspension models allows Smart Cable Routing which is very resistant against water and dirt.

To change the cables simply unscrew and open the three cable brackets on the downtube.

1



Smart cable routing

MECHANICS HINT

The outer housing of the cables can also be fixed on the bottle cage with cable fixers, the two brackets below the cage are not needed anymore.

2



ADJUSTMENT OF SEAT POST-HEIGHT

IMPORTANT!

The seatpost has to be brought into the seattube at a minimum of 100 mm and must not stick out more than 25 mm at the bottom end.

Some bikes of the Nitrous series are equipped with a telescope seatpost which offers a wider adjustment range of the seatheight.

In case you want to upgrade your Nitrous with the telescope seatpost you can order it at your local Scott dealer with article number 15.1.844.405.0.349.

3

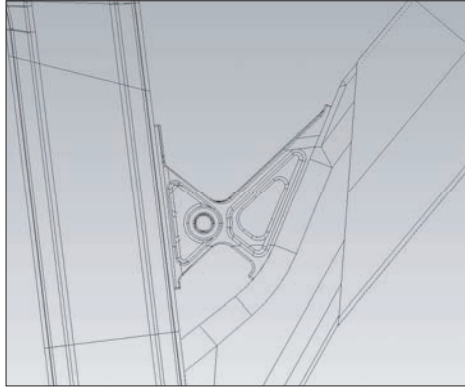


Telescope seatpost

REAR TRAVEL NITROUS

Using the 200mm rear shock of Fox (eye to eye 200 mm, Travel 57mm) will result in 195mm rear travel at a suspension ratio of 3,42.

4



Shock mount main frame

5



Piggy Pack up-front

IMPORTANT

Note that you have to mount the Fox Rear Shock always with the container (Piggy Pack) as shown underneath in the position "front top". Mounting the rear shock in a different position can lead to severe damages at the frame, the swingarm and the rear shock.

SET-UP NITROUS

Coil-Over-Shock:

For the adjustment of the negative travel (SAG) of Nitrous it is really important to check first if the coil fits to the weight of the rider.

Recommended coil:

Print on coil	Weight of Rider
350 x 2.25	55- 65 kg
450 x 2.25	65- 75 kg
550 x 2.25	75- 85 kg
650 x 2.25	85- 95 kg
750 x 2.25	95- xx kg

Inline we will have size S with coil 500 x 2.25 for 65-75 kg rider weight, size M with coil 600 x 2.25 for 75-85 kg and size L with coil 700 x 2.25 for 85-95 kg rider weight.

If the recommended coil for the weight of the rider is mounted on the bike, you can start to adjust the SAG.

With an eye-to eye distance of 200mm and a shock travel of 57mm we recommend a SAG between 25-30% of the shock travel which means 15-18mm.

When sitting on the bike there should be an eye-to-eye distance of 172-175mm.

An easy way to control the SAG is to use the SAG-Boy on the back of this manual.

The SAG-Boy is with middle length of 173mm on the back of the manual.

We recommend a minimum preload of the coil of 2-3 turns of the preload cup and a maximum preload of 7-8 turns.

In case you need more or less preload please use a softer or harder coil.

For further information concerning the rear shock please read the attached manual of the rear shock producer.

IMPORTANT

After a dismantlement of the rear shock, the front fixing bolt on the mainframe of the rear shock should be tightened with a tightening torque of 14 Nm, the rear shock fixing bolt on the swingarm with 10 Nm.

If this is not done correctly the rear shock can be damaged.

SET-UP OF OTHER SHOCK MODELS

If you want to use a different rear shock model than the one originally on the bike, please make sure that the shock will not damage the frame.

Please follow the instruction below:

Please make sure that the rear shock or its accessory parts do not touch the frame when mounting or suspending.

For doing so remove the coil, install the shock and compress the shock completely.

If the shock touches the frame while doing so do not use this shock in order to avoid damage to frame, swingarm or shock.

Please check this issue on all travel adjustment options.

6



Shock without spring

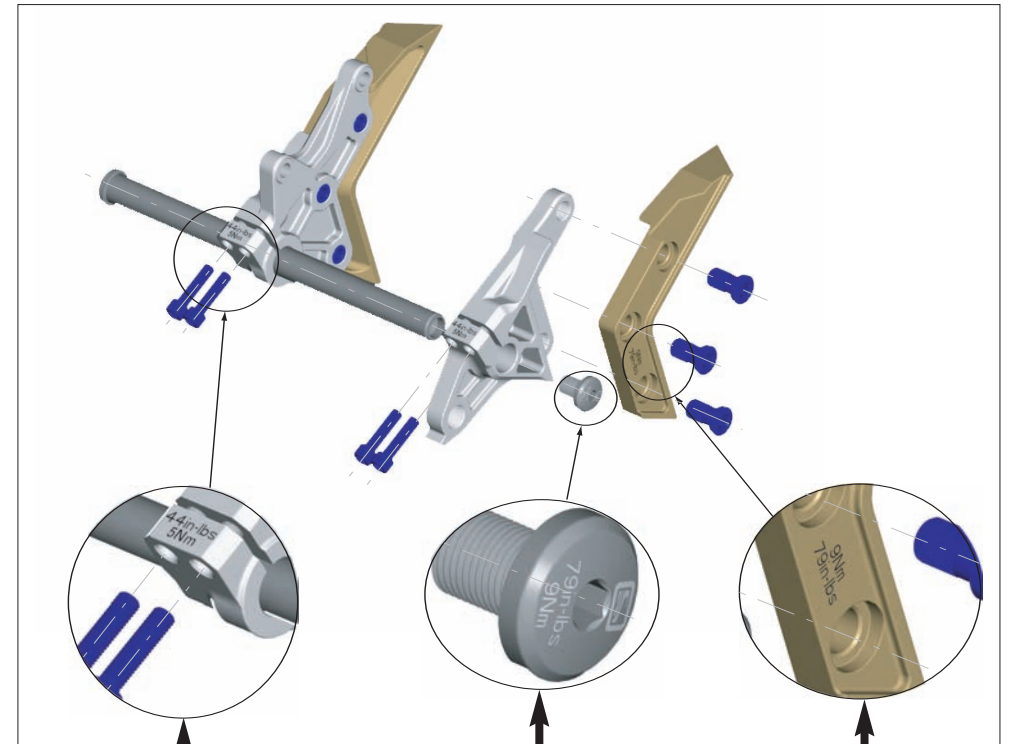
REPLACEABLE DROPOUTS

On Nitrous bikes of model year 07 you'll find 2 different styles of dropouts

Please check the tightening torques of the screws on the pictures below.

1. Drop out for 12mm through axle system rear hub:

7



44in-lbs
5Nm

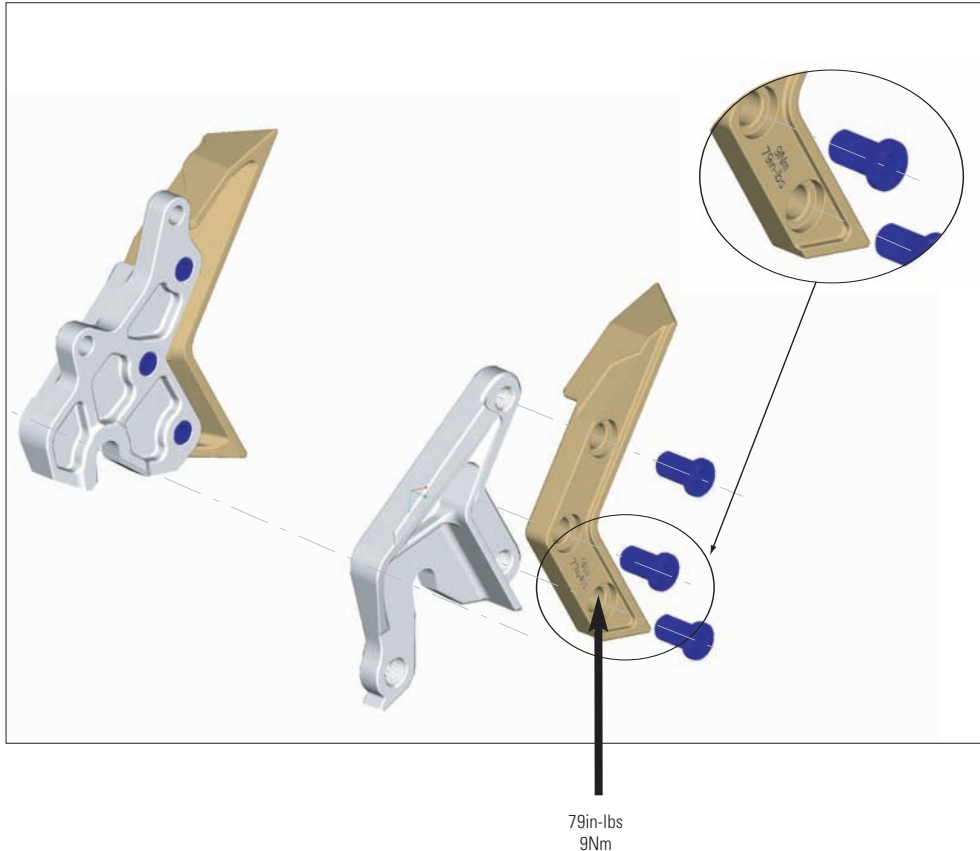
79in-lbs
9Nm

79in-lbs
9Nm

REPLACEABLE DROPOUTS

2. Drop out for standard QR axle system rear hub:

8



FRONT FORK SET-UP CHANGE OF FRONT FORK

For the set up of the front fork please use the fork specific manual attached to the bike.

We recommend to use front forks with a travel between 150-200mm, as this will not influence too much the geometry and handling of the bike.

The frame also can be used with a double bridge crown (triple-clamp-design).

Please ask your Scott dealer to make sure that the fork of your choice will not damage the frame.

The frame of Nitrous is originally equipped with a head tube with a diameter to fit 1.5" fork steerer tubes.

Some complete bikes are equipped with a reducer-headset to use forks with a steerer diameter of 1 1/8", or the bikes have an alloy reducer from 1.5" to 1 1/8" to fit for standard 1 1/8" headsets.

In case you want to use a fork with 1.5" standard steerer you have to replace the original headset.

PIVOT MAINTENANCE

The pivot and bearings on SCOTT Nitrous are extremely easy to maintain.

An external treatment with a grease spray after every bike wash is all you have to do. We do not recommend heavy grease sprays since these will leave a film on the parts which is difficult to remove. We recommend the same for the chain also.

If you have to change the bearings you can order them included in a service kit at your local SCOTT dealer with parts number 15.1.860.402.0.000 or buy them with international parts number 61803 2RS 17x26x5 in a hardware store.

In case of a change of the bearings or of the rear swingarm you should contact your local SCOTT dealer therefore you need special tools for disassembly and assembly.

WARRANTY

Model _____

Year _____

Size _____

Frame _____

WARRANTY

SCOTT bikes are made using the most innovative production and quality methods. They are equipped with best components of well known parts suppliers.

Doing so SCOTT warrants its frames and swingarms for five years (subject to compliance with maintenance ranges, see below) and SCOTT forks (provided it is a fork of SCOTT) for two years for defects in material and/or workmanship in case of purchase of completely assembled bikes.

This warranty of 5 years for the frames shall only be granted in case once a year a maintenance service has been effected according to maintenance requirements as set forth in this manual by an authorised SCOTT dealer.

The authorised SCOTT dealer shall confirm the effected annual maintenance service by stamp and signature.

In case such an annual maintenance service has not been effected the warranty of 5 years for the frame shall be reduced to 3 years.

Costs for maintenance and service have to be born by the owner of the SCOTT bike.

On High Octane the warranty period is limited to 2 years.

The warranty period starts at the day of purchase.

This warranty is limited to the first buyer, what means the first person who uses the bike and only with the use it was made for. Furthermore, this warranty is limited to purchases via authorized SCOTT-dealers to the exclusion of purchases via internet auctions.

In case of a warranty claim the decision to repair or to replace the defective part is up to SCOTT. Non defective parts will only be replaced at the guarantee's own expense.

Fair wear and tear is not covered by the warranty. A complete list of all parts of wear and tear can be found in the next chapter of this manual.

In addition, you will find at the end of this manual a protocol for the handing over of the bike which will remain in copy at the SCOTT dealer after acceptance and signature of the consumer.

It is obligatory to show this protocol of handing over together with the defective part in case of a warranty claim given that it provides evidence of purchase. Otherwise no warranty is granted.

In principle, this warranty is granted worldwide. Claims must be made through an authorized dealer, for information regarding the nearest dealer, write or call this company or the national SCOTT distributor.

Normal wear, accident, neglect, abuse, improper assembly, improper maintenance by other than an authorized dealer or use of parts or devices not consistent with the use originally intended for the bicycle as sold are not covered by this warranty.

Hereby SCOTT grants a voluntarily manufacturer's warranty. Additional entitlements according to national warrant of merchantability are reserved.