



www.scott-sports.com

All rights reserved © 2014 SCOTT Sports SA
SCOTT Sports SA | 17 Route du Crochet | 1762 Givisiez | Switzerland

Distribution: SSG (Europe) Distribution Center SA
P.E.D Zone C1, Rue Du Kiell 60 | 6790 Aubange | Belgium

V4.3/19012015

SCOTT PLASMA 4

BIKE OWNER'S MANUAL 2015





www.scott-sports.com

The Plasma 4 Carbon bikes should be adjusted exactly to the current rider for reaching maximum safety and performance while riding.

Please note that all adjustments should be done at your local SCOTT dealer or following to this manual.

CONTENT

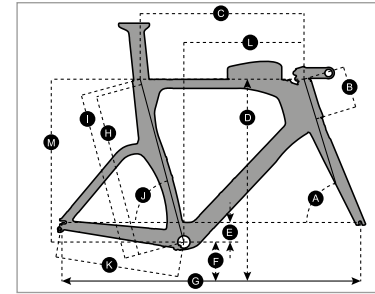
Plasma 4 Concept	04
Geometry/Technical Data Plasma 4	05
Plasma 4 Frameset Content	06
Specific Torques Values Table.	06
Rear Drop out and Derailleur Hanger	07
BB Standard and FD Mount Standard.	08
Headset Options	08
BB Cable Guide and Cable Routing	08
Seatpost and Seatube Clamp	09
Storage Box	11
Warranty	12

PLASMA 4 CONCEPT

Plasma 4 is the result of research and development based on the feedback of the SCOTT-triathlon and time trial athletes searching for one of the most efficient aerodynamics orientated yet affordable frames in the market.

SCOTT's focus was not only on the frame and rider aerodynamics but also on the bike's ergonomic side and adjustability as well as the frame front end stiffness.

GEOMETRY/TECHNICAL DATA PLASMA 4

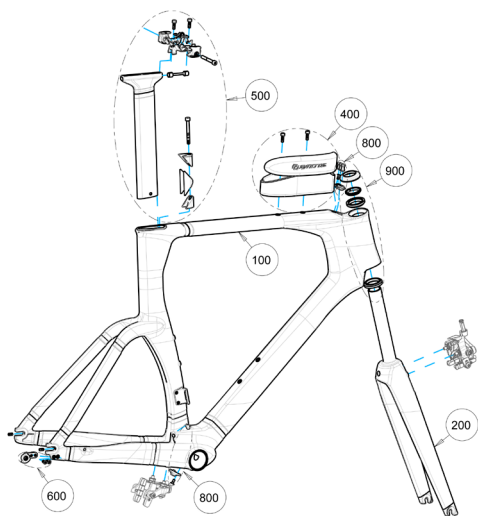


Headtube diameter	Plasma 4: 1.1/8"
BB housing	PF BB 86
Rear brake	SHIMANO direct mount compatible brake calipers
Front brake	Compatible with both SHIMANO direct mount and single bolt front brake calipers.
Seat post saddle rails clamps	Different seatpost saddle rail clamps are available to match with your saddle: 7x7mm, 8x8.5mm or 7x9.6mm
Rear hanger	Compatible Plasma 4 and Plasma 5
Shifting	Mechanical and electrical shifting compatible

	S/51	M/54	L/57	XL/60
A HEAD TUBE ANGLE	72.0°	73.0°	73.0°	73.5°
B HEAD TUBE LENGTH	100.0 mm 3.9 in	128.0 mm 5.0 in	159.0 mm 6.3 in	199.0 mm 7.8 in
C TOP TUBE HORIZONTAL	526.0 mm 20.7 in	546.0 mm 21.5 in	566.0 mm 22.3 in	583.0 mm 23.0 in
D STANDOVER HEIGHT	769.0 mm 30.3 in	799.0 mm 31.5 in	829.0 mm 32.6 in	869.0 mm 34.2 in
E BB OFFSET	-65.0 mm -2.6 in	-65.0 mm -2.6 in	-65.0 mm -2.6 in	-65.0 mm -2.6 in
F BB HEIGHT	269.0 mm 10.6 in	269.0 mm 10.6 in	269.0 mm 10.6 in	269.0 mm 10.6 in
G WHEEL BASE	965.0 mm 38.0 in	983.0 mm 38.7 in	1,009.0 mm 39.7 in	1,029.0 mm 40.5 in
H BB CENTER TO TUBE CENTER	504.9 mm 19.9 in	534.7 mm 21.0 in	564.4 mm 22.2 in	604.2 mm 23.8 in
I BB CENTER TO TOP OF SEATTUBE	519.9 mm 20.5 in	549.7 mm 21.6 in	579.4 mm 22.8 in	619.2 mm 24.4 in
J SEATTUBE ANGLE	74.0°	75.0°	75.0°	76.0°
K CHAINSTAY MIN.	403.0 mm 15.9 in	403.0 mm 15.9 in	403.0 mm 15.9 in	403.0 mm 15.9 in
L REACH	383.0 mm 15.1 in	400.0 mm 15.7 in	417.0 mm 16.4 in	430.0 mm 16.9 in
M STACK	500.0 mm 19.7 in	530.0 mm 20.9 in	560.0 mm 22.0 in	600.0 mm 23.6 in
N STEM LENGTH				

PLASMA 4 FRAMESET CONTENT

1. Frame
2. Fork
3. Headset
4. Seatpost
5. Storage box



ITEM	NAME	DESCRIPTION	QTY
100	MAINFRAME	S/M/L/XL	1
200	FORK	SAME FOR ALL SIZES	1
400	ACCESSORIES	SAME FOR ALL SIZES	1
500	HARDWARE	SAME FOR ALL SIZES	1
600	REAR DERAILLEUR HANGER	SAME FOR ALL SIZES	1
800	CABLE ROUTING SHIFTING	SAME FOR ALL SIZES	1
900	HEADSET	SAME FOR ALL SIZES	1

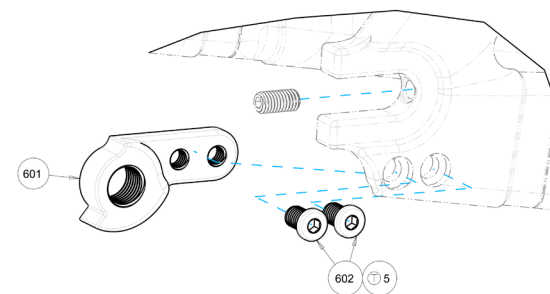
SPECIFIC TORQUES VALUES TABLE

TORQUE REF.	MAX. TORQUE
⊕ 1	1Nm
⊕ 2	4Nm
⊕ 3	13Nm
⊕ 4	8Nm
⊕ 5	3Nm
⊕ 6	1.5Nm
⊕ 7	1.5Nm

REAR DROP OUT AND DERAILLEUR HANGER

- **Setup screw:** Dropout length can be set to adjust the rear wheel tire clearance with the frame (100) thanks to the rear dropout adjustment screws. The chainstays length can be set from 403mm to 413mm.
 - Loosen the screw to set a longer chainstays length,
 - Tighten the screw to set a shorter chainstays length.

Make sure right and left side are set at the same length by assembling the rear wheel and verifying it is centred with the chainstays.



ITEM	NAME	MATERIAL	SUPPLIER	QTY
601	TT4_15_RD_HANGER	ALLOY	TTC	1
602	ROAD-DROP-SCREW-M5	STEEL	TTC	2

- **Rear derailleur hanger:** place the rear derailleur hanger in the cavity and tighten the 2x M5 screws to their specified torques.

Rear derailleur hanger: SCOTT Part number 239178

Drop out adjustment screws: Standard M5*10mm headless screw available in any hardware shop.

BB STANDARD AND FD MOUNT STANDARD

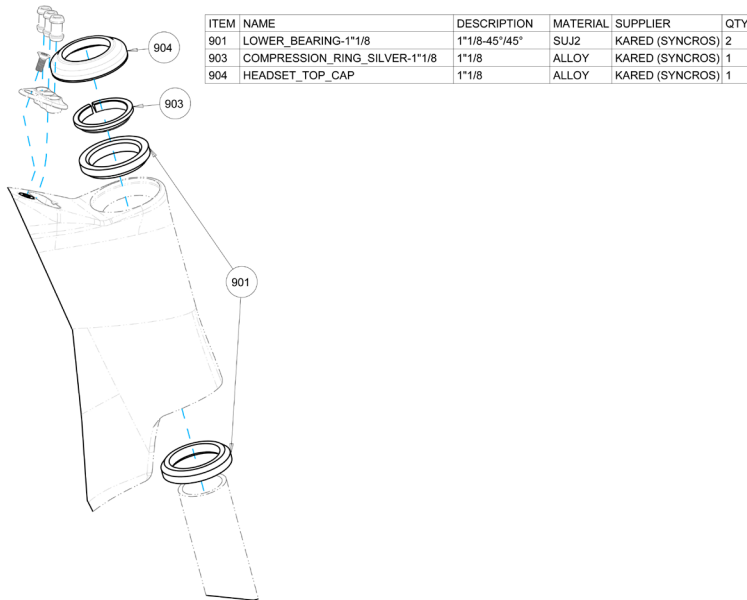
The BB standard on Plasma 4 is PF86.

FD Mount Standard: Brazed on standard same as other SCOTT road frames: Solace, Addict or Foil.

HEADSET OPTIONS

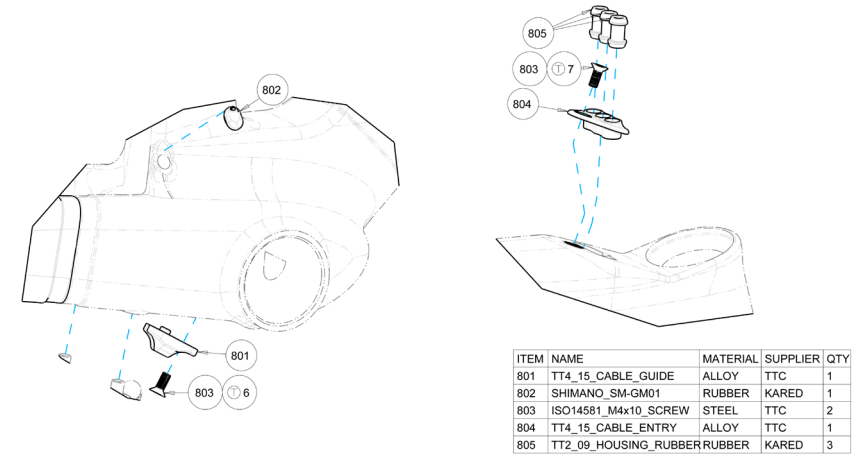
Plasma 4 headset Syncros Drop-In 1 1/8" black part number: 238600

Bearings standard: IS41/28.6 | IS41/30



BB CABLE GUIDE AND CABLE ROUTING

BB cable guide set Plasma 4 Di2 + mechanical part number: 239179



SEATPOST AND SEATUBE CLAMP

SADDLE ASSEMBLY:

IMPORTANT

Before assembling the saddle, make sure the seatpost saddle rail clamps (524/525) are compatible with your saddle rails!

1. measure your saddle rails height and width (HxW)
2. Ritchey WCS Carbon One-Bolt Saddle Rail Clamp outer-pieces specifications should be compatible with your saddle rails
3. if the saddle rails dimensions you measured are different from the saddle clamps specifications, purchase the required saddle rail clamps parts at your retailer's
4. following dimensions are available: 7x7mm, 8x8.5mm or 7x9.6mm
5. set the right saddle tilt and position the saddle rails so that the saddle rail clamps are in the middle of the usable rail clamping area
6. tighten the M6 screw (527) to the specified torque (T13) to assemble the saddle
7. use the seatpost adjustment barrel to adjust your BB-Saddle horizontal offset
8. once the right offset is set, tighten the two M5 barrel screws (521) to the specified torque (T12)
9. in some cases, you will need to remove the saddle to access the two M5 barrel screws.

SEATPOST ASSEMBLY:

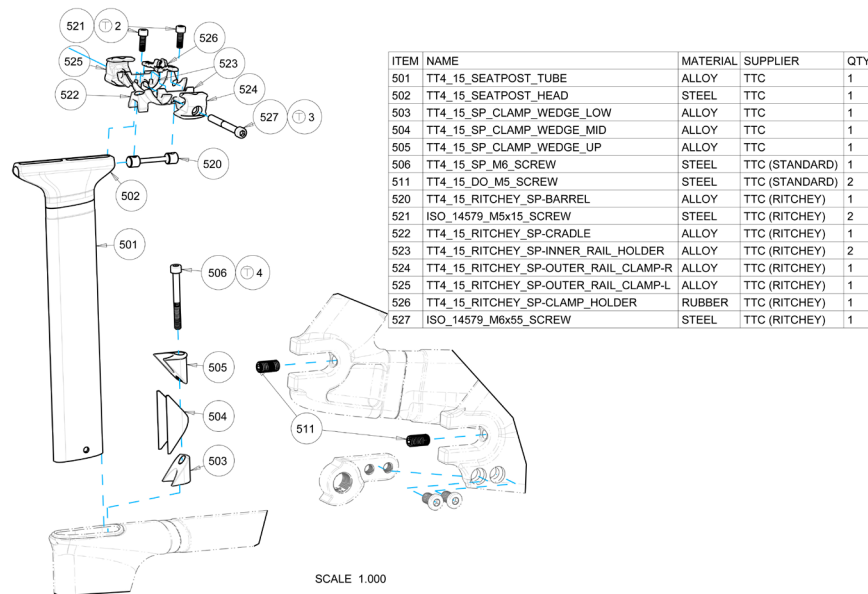
IMPORTANT

Before assembling the seatpost into the frame, make sure the rear side of the seatpost (side where head is longer) is at the rear end of the frame

1. push gently the seatpost into the frame
2. **for electronic shifting:** make sure the battery does not get stuck into the frame
3. once the desired seatpost height is achieved pre-assemble the seatpost wedge: position the upper wedge part (505) over the mid wedge part (504) and the low wedge threaded part (503) below the mid wedge part
4. position the M6 wedge screw (506) into the assembly head up and pre-tighten it over 3 turns
5. position the wedge assembly into the seattube insert in front of the seattube, its concave face should correspond to the seatpost front surface
6. tighten the M6 screw to the specified torque (T11) while making sure the upper surface of the wedge coincides with the upper surface of the top tube.

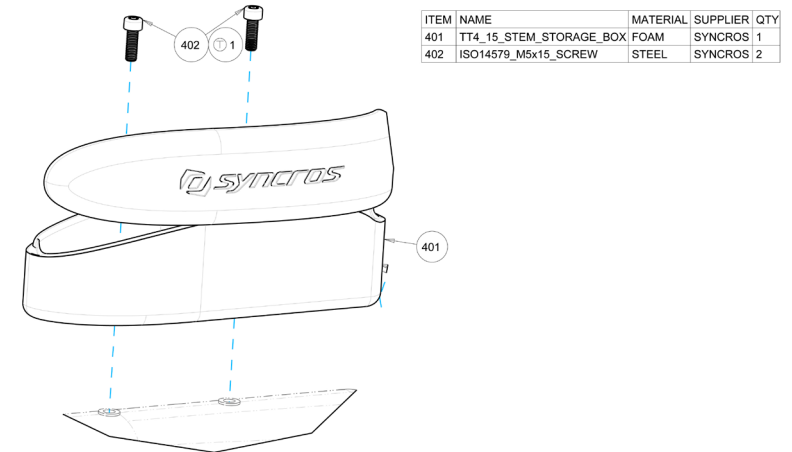
Seatpost and seatclamp assembly are fully compatible between Plasma 4 and Plasma 5 frames.

- **Seatpost Plasma 4/5 SCOTT part number: 239318**
- **Seat Clamp Plasma 4/5 SCOTT part number: 239544**



STORAGE BOX

Plasma 4 framesets and complete bikes are delivered with an additional storage box that can be fitted to the top front end of the Toptube via 2 M5 Allen screws as shown on the sketch below.



WARRANTY

Model

Year

Size

Frame Nr.

Shock Nr.

Date of purchase

WARRANTY

SCOTT bikes are made using the most innovative production and quality methods. They are equipped with best components of well known parts suppliers.

Doing so SCOTT warrants its frames and swingarms for five years (subject to compliance with maintenance ranges, see below) and SCOTT forks (provided it is a fork of SCOTT) for two years for defects in material and/or workmanship in case of purchase of completely assembled bikes.

This warranty of 5 years for the frames shall only be granted in case once a year a maintenance service has been effected according to maintenance requirements as set forth in this manual by an authorised SCOTT dealer.

The authorised SCOTT dealer shall confirm the effected annual maintenance service by stamp and signature.

In case such an annual maintenance service has not been effected the warranty of 5 years for the frame shall be reduced to 3 years.

Costs for maintenance and service have to be born by the owner of the SCOTT bike.

On Gambler, Voltage Fr and Volt-X the warranty period is limited to 2 years.

The warranty period starts at the day of purchase. This warranty is limited to the first buyer, what means the first person who uses the bike and only with the use it was made for. Furthermore, this warranty is limited to purchases via authorized SCOTT-dealers

The warranty is solely granted in case of purchase of a completely assembled bike to the explicit exclusion of purchases of not completely assembled bikes.

In case of a warranty claim the decision to repair or to replace the defective part is up to SCOTT. Non defective parts will only be replaced at the guarantee's own expense.

Fair wear and tear is not covered by the warranty.

A complete list of all parts of wear and tear can be found in the next chapter of this manual.

In addition, you will find at the end of this manual a protocol for the handing over of the bike which will remain in copy at the SCOTT dealer after acceptance and signature of the consumer.

It is obligatory to show this protocol of handing over together with the defective part in case of a warranty claim given that it provides evidence of purchase. Otherwise no warranty is granted.

In principle, this warranty is granted worldwide. Claims must be made through an authorized dealer, for information regarding the nearest dealer, write or call this company or the national SCOTT distributor.

Normal wear, accident, neglect, abuse, improper assembly, improper maintenance by other than an authorized dealer or use of parts or devices not consistent with the use originally intended for the bicycle as sold are not covered by this warranty.

Hereby SCOTT grants a voluntarily manufacturer's warranty. Additional entitlements according to national warrant of merchantability are reserved.

For warranty info on the Fox Nude shock please refer to the attached manual of Fox Nude.