



www.scott-sports.com

All rights reserved © 2014 SCOTT Sports SA
SCOTT Sports SA | 17 Route du Crochet | 1762 Givisiez | Switzerland

Distribution: SSG (Europe) Distribution Center SA
P.E.D Zone C1, Rue Du Kiell 60 | 6790 Aubange | Belgium

V4.3/19012015

SCOTT SCALE CARBON

BIKE OWNER'S MANUAL 2015





www.scott-sports.com

The Scale Carbon bikes should be adjusted exactly to the current rider to maximize safety, comfort and fun while riding.

All adjustments should be done at your local SCOTT dealer or by following the instructions in this manual.

Please contact your authorized SCOTT dealer if you have any doubts or require further information in order to avoid technical problems or any harm.

CONTENTS

Scale Carbon Concept	04
Geometry/Technical Data Scale Carbon	04
BB Standards/FD Mounting Details	06
Chainguide	06
Headset Options	07
BB Cable Guide/Cable Routing	08
Seattube Clamp	10
Replaceable Rear Derailleur Hanger	10
Rear Disc Brake Mount	11
Front Fork Set-Up/Change Of Front Fork	11
Warranty	12

SCALE CARBON CONCEPT

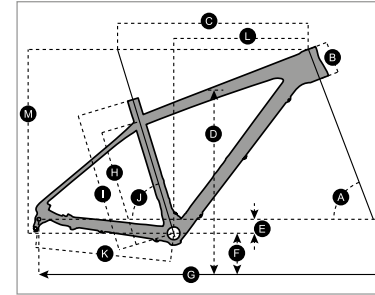
Scale is the result of research and development based on the feedback from the SCOTT-ODLO Racing Team searching for one of the lightest cross country racing frames in the market.

SCOTT's focus was not only on creating a lightweight frame, but one that was also a stiff and easy to handle racing frame.

GEOMETRY/TECHNICAL DATA SCALE CARBON

Seatpost diameter	Scale 700: 31.6mm (27.5"), Scale 900: 34.9mm (29")
Seattube clamp	Scale 700: 34.9mm (27.5"), Scale 900: 38.2mm (29")
Headtube diameter	1 1/8" /1.5", tapered, cups semi-integrated, 50-61mm cup OD
Fork travel	100mm
Technical fork length	Scale 700: 487mm (27.5"), Scale 900: 506mm (29")
BB housing	PF BB 92,
Rear Hub Width	IDS SL2 135-5/135-12/142-12mm
Max tire width	57.5mm/2.25"
Chainring size	min. 22T, max. 44T

GEOMETRY/TECHNICAL DATA SCALE CARBON



SCALE 700

	XS		S		M		L		XL	
A HEAD TUBE ANGLE	69.0°		69.0°		69.0°		69.0°		69.0°	
B HEAD TUBE LENGTH	100.0 mm	3.9 in	100.0 mm	3.9 in	100.0 mm	3.9 in	115.0 mm	4.5 in	125.0 mm	4.9 in
C TOP TUBE HORIZONTAL	560.0 mm	22.0 in	575.0 mm	22.6 in	600.0 mm	23.6 in	625.0 mm	24.6 in	650.0 mm	25.6 in
D STANDOVER HEIGHT	720.0 mm	28.3 in	728.9 mm	28.7 in	758.0 mm	29.8 in	786.8 mm	31.0 in	819.7 mm	32.3 in
E BB OFFSET	-44.0 mm	-1.7 in	-44.0 mm	-1.7 in	-44.0 mm	-1.7 in	-44.0 mm	-1.7 in	-44.0 mm	-1.7 in
F BB HEIGHT	307.5 mm	12.1 in	307.5 mm	12.1 in	307.5 mm	12.1 in	307.5 mm	12.1 in	307.5 mm	12.1 in
G WHEEL BASE	1,060.2 mm	41.7 in	1,075.2 mm	42.3 in	1,100.2 mm	43.3 in	1,126.3 mm	44.3 in	1,152.0 mm	45.4 in
H BB CENTER TO TOPTUBE CENTER	313.4 mm	12.3 in	315.8 mm	12.4 in	369.3 mm	14.5 in	409.3 mm	16.1 in	458.2 mm	18.0 in
I BB CENTER TO TOP OF SEATTUBE	355.0 mm	14.0 in	390.0 mm	15.4 in	440.0 mm	17.3 in	480.0 mm	18.9 in	530.0 mm	20.9 in
J SEAT ANGLE	73.0°		73.0°		73.0°		73.0°		73.0°	
K CHAINSTAY	427.0 mm	16.8 in	427.0 mm	16.8 in	427.0 mm	16.8 in	427.0 mm	16.8 in	427.0 mm	16.8 in
L REACH	382.5 mm	15.1 in	398.1 mm	15.7 in	423.1 mm	16.7 in	443.8 mm	17.5 in	466.0 mm	18.3 in
M STACK	576.0 mm	22.7 in	578.6 mm	22.8 in	578.6 mm	22.8 in	592.6 mm	23.3 in	601.9 mm	23.7 in
N STEM LENGTH	60.0 mm	2.4 in	70.0 mm	2.8 in	80.0 mm	3.1 in	90.0 mm	3.5 in	100.0 mm	3.9 in

SCALE 900

	S		M		L		XL		XXL	
A HEAD TUBE ANGLE	69.5°		69.5°		69.5°		69.5°		69.5°	
B HEAD TUBE LENGTH	105.0 mm	4.1 in	105.0 mm	4.1 in	115.0 mm	4.5 in	125.0 mm	4.9 in	140.0 mm	5.5 in
C TOP TUBE HORIZONTAL	580.0 mm	22.8 in	600.0 mm	23.6 in	620.0 mm	24.4 in	640.0 mm	25.2 in	660.0 mm	26.0 in
D STANDOVER HEIGHT	756.0 mm	29.8 in	783.0 mm	30.8 in	810.0 mm	31.9 in	842.0 mm	33.1 in	883.9 mm	34.8 in
E BB OFFSET	-60.0 mm	-2.4 in	-60.0 mm	-2.4 in	-60.0 mm	-2.4 in	-60.0 mm	-2.4 in	-60.0 mm	-2.4 in
F BB HEIGHT	310.0 mm	12.2 in	310.0 mm	12.2 in	310.0 mm	12.2 in	310.0 mm	12.2 in	310.0 mm	12.2 in
G WHEEL BASE	1,079.0 mm	42.5 in	1,096.0 mm	43.1 in	1,117.0 mm	44.0 in	1,137.0 mm	44.8 in	1,160.6 mm	45.7 in
H BB CENTER TO TOPTUBE CENTER	329.0 mm	13.0 in	375.0 mm	14.8 in	415.0 mm	16.3 in	465.0 mm	18.3 in	522.8 mm	20.6 in
I BB CENTER TO TOP OF SEATTUBE	390.0 mm	15.4 in	440.0 mm	17.3 in	480.0 mm	18.9 in	530.0 mm	20.9 in	580.0 mm	22.8 in
J SEAT ANGLE	72.5°		72.5°		72.5°		72.5°		72.5°	
K CHAINSTAY	438.0 mm	17.2 in	438.0 mm	17.2 in	438.0 mm	17.2 in	438.0 mm	17.2 in	438.0 mm	17.2 in
L REACH	385.0 mm	15.2 in	405.0 mm	15.9 in	422.0 mm	16.6 in	439.0 mm	17.3 in	452.9 mm	17.8 in
M STACK	618.0 mm	24.3 in	618.0 mm	24.3 in	628.0 mm	24.7 in	637.0 mm	25.1 in	650.8 mm	25.6 in
N STEM LENGTH	70.0 mm	2.8 in	80.0 mm	3.1 in	90.0 mm	3.5 in	100.0 mm	3.9 in	110.0 mm	4.3 in

BB STANDARDS/FD MOUNTING DETAILS

Scale Carbon is available for PressFit 92 Cartridges (PF92).

PF BB 92 has a housing width of 92mm (Scale 700) or 89.5mm plus a 2.5mm additional washer (Scale 900) with an inner diameter for the cartridges of 41mm.



Scale 700 (27.05") FD

The front derailleur (FD) fixation for Scale 700 is a direct mount system.

It is made for Shimano E-Type derailleurs or SRAM S3 assembly

In addition it has an integrated chainguide assembled on this fixation plate.



Scale 900 (29") FD

The Front Derailleur (FD) clamp is with an inner diameter of 34.9mm, the cable routing on the frame is for "down route/pull - down swing" models.

IMPORTANT!

Please note that the maximum tightening torque on the FD clamp is 5Nm/44in/lbs.

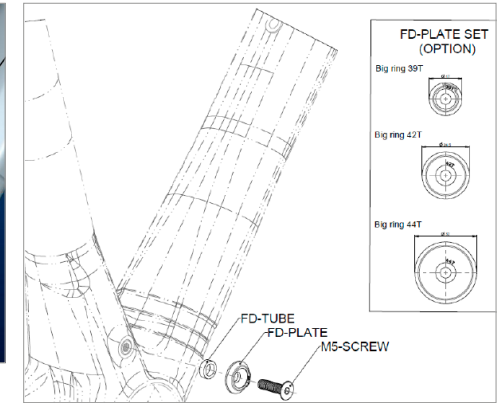
A higher tightening torque might cause damage to the FD camp and/or frame tube! Please also refer to the related manuals of the manufacturer of the FD.

CHAINGUIDE

On some Scale 900 (29") Carbon models you will find a chainguide system to support the shifting performance when using 2 chainring cranksets.

3 different mounting plates are available to match the different sizes of the outer chainrings (39/42/44T).

Please note the max. tightening torque of 5Nm/44 in/lbs on the mounting screw of the plate.

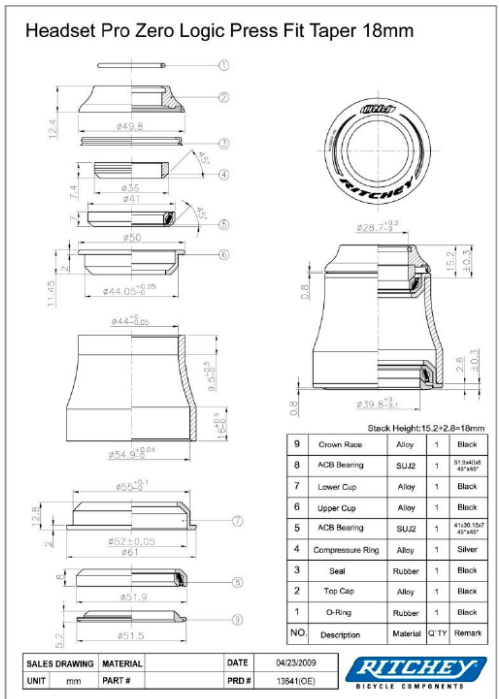


HEADSET OPTIONS

Scale Carbon features a tapered headset and fork steerer system to match with semi-integrated headsets of the "50-61"mm range.

The steerers of those forks are tapered from 1.5" to 1 1/8".

This bigger diameter of the fork steerer as well as on the frame headtube helps to increase the stiffness and handling of the bike.



Ritchey WCS Carbon Zero Tapered	PF 50-61mm	18mm UD	PRD 13636
Ritchey PRO Tapered	PF 50-61mm	12.9mm	PRD 13640

It is also possible to use forks with a standard 1 1/8" steerer tube when using a reducer headset such as e.g.

Ritchey WCS Carbon Zero Tapered	PF 50-61mm	18mm UD for 1 1/8" fork	PRD 14860
---------------------------------	------------	-------------------------	-----------

BB CABLE GUIDE/CABLE ROUTING

Scale Carbon features also an internal cable routing for front and rear derailleur.

A special BB Cable Guide was developed for Scale Carbon which is available as a spare part at the SCOTT distribution with article number

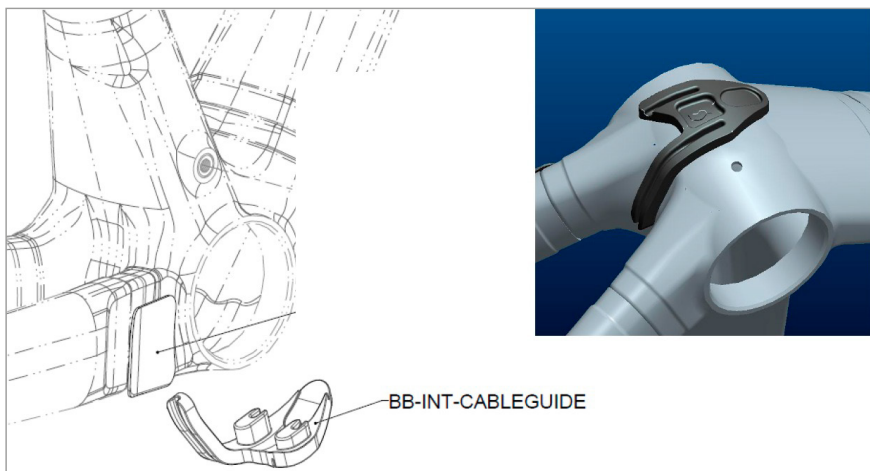
for Scale 700

235285 Cableguide BB Scale Carbon 700 2014

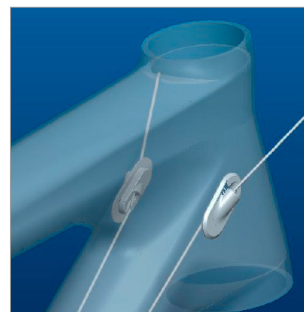
and for Scale 900

219579 Cableguide BB Scale Carbon

Please note that those 2 cableguides are not interchangeable between the frame sizes.

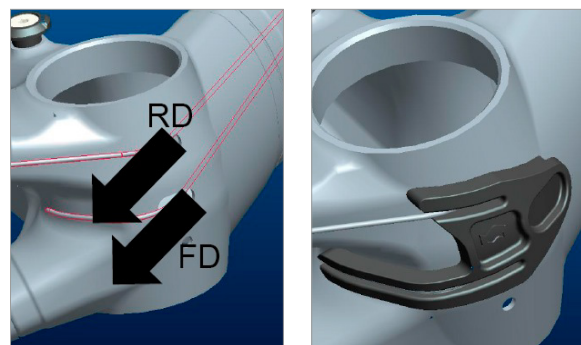


Please note that the outer housing of the FD and RD cables will stop at the cable stop/port on the front end of the down tube.



If you want to replace the cables, please follow these steps:

1. Remove the clip-in BB Guide in the BB housing
2. Push the inner cables from the front downward inside the downtube to the BB housing.
3. Pull them out of the related holes (RD on right side, FD on left side) on the BB housing.



4. Push them through the related holes on the BB Guide and clip the BB Guide into the BB housing
5. Follow the standard set up and assembly instructions of the shifting system manufacturer for final adjustment of the shifting system

SEATTUBE CLAMP

Please make sure to only use a seatclamp with an inner diameter of 34.9mm (Scale 700) or 38.2mm (Scale 900) and please note the maximum tightening torque on the fixing bolt of 5Nm/44 in/lbs

REPLACEABLE REAR DERAILLEUR HANGER

Scale Carbon uses the same replaceable rear derailleur hanger system (called IDS SL2) as SCOTT Spark, Genius and Genius LT.

Depending on the different models you'll find following options:

1. 142mm axle with RWS 142/12

This is available via the SCOTT distribution with:

219574	complete set of RWS 142/12
219577	right side replaceable RD hanger

2. 135mm axle with RWS 135/5

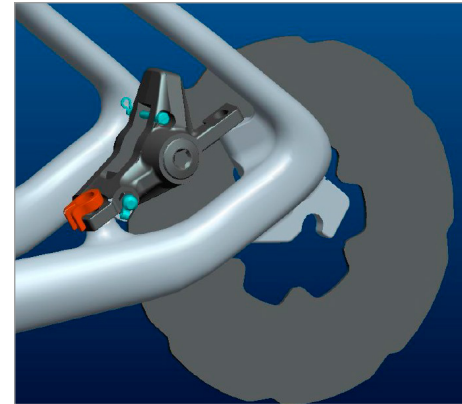
This is available via the SCOTT distribution with:

219572	complete set of RWS 135/5
219575	right side replaceable RD hanger

If you want to use another RWS standard SCOTT can also offer the following as after-market parts for specific wheelsets via the SCOTT distribution:

219574	RWS 135/12 parts set
219576	right side replaceable RD hanger

REAR DISC BRAKE MOUNT



The rear disc brake on Scale Carbon is Postmount (PM) Standard on the left chainstay and optimized for 160mm/6" rotors, so the calliper can be mounted directly without adapters on the Postmount fixation.

Please note Scale Carbon is designed for disc rotors between 160mm/6" and 185mm/7" (adapter needed from manufacturer of the brake) only.

FRONT FORK SET-UP/CHANGE OF FRONT FORK

For the set up of the front fork please use the fork specific manual attached to the bike.

We recommend using front forks with distance of

487mm/19.2" for Scale 700 and

506mm/19.9" for Scale 900

between mid of axle to top of crown, as this will not influence the geometry and alter handling of the bike.

WARRANTY

Model

Year

Size

Frame Nr.

Shock Nr.

Date of Purchase

WARRANTY

SCOTT bikes are made using the most innovative production and quality methods. They are equipped with best components of well known parts suppliers.

Doing so SCOTT warrants its frames and swingarms for five years (subject to compliance with maintenance ranges, see below) and SCOTT forks (provided it is a fork of SCOTT) for two years for defects in material and/or workmanship in case of purchase of completely assembled bikes.

This warranty of 5 years for the frames shall only be granted in case once a year a maintenance service has been effected according to maintenance requirements as set forth in this manual by an authorized SCOTT dealer.

The authorized SCOTT dealer shall confirm the effected annual maintenance service by stamp and signature.

In case such an annual maintenance service has not been effected the warranty of 5 years for the frame shall be reduced to 3 years.

Costs for maintenance and service have to be born by the owner of the SCOTT bike.

On Gambler, Voltage Fr and Volt-X the warranty period is limited to 2 years.

The warranty period starts at the day of purchase. This warranty is limited to the first buyer, what means the first person who uses the bike and only with the use it was made for. Furthermore, this warranty is limited to purchases via authorized SCOTT dealers

The warranty is solely granted in case of purchase of a completely assembled bike to the explicit exclusion of purchases of not completely assembled bikes.

In case of a warranty claim the decision to repair or to replace the defective part is up to SCOTT. Non defective parts will only be replaced at the guarantee's own expense.

Fair wear and tear is not covered by the warranty.

A complete list of all parts of wear and tear can be found in the next chapter of this manual.

In addition, you will find at the end of this manual a protocol for the handing over of the bike which will remain in copy at the SCOTT dealer after acceptance and signature of the consumer.

It is obligatory to show this protocol of handing over together with the defective part in case of a warranty claim given that it provides evidence of purchase. Otherwise no warranty is granted.

In principle, this warranty is granted worldwide. Claims must be made through an authorized dealer, for information regarding the nearest dealer, write or call this company or the national SCOTT distributor.

Normal wear, accident, neglect, abuse, improper assembly, improper maintenance by other than an authorized dealer or use of parts or devices not consistent with the use originally intended for the bicycle as sold are not covered by this warranty.

Hereby SCOTT grants a voluntarily manufacturer's warranty. Additional entitlements according to national warrant of merchantability are reserved.